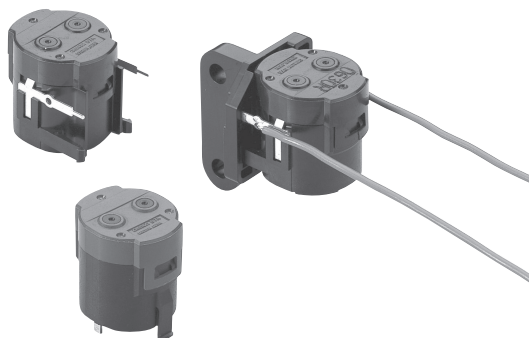


# D7A



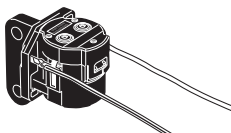
## Automatic Horizontal Vibration Sensor

### Quickly Detect Earthquakes to Help Prevent Secondary Disasters. Auto-level Mechanism Enables Mounting at $\pm 5^\circ$

- Auto-level mechanism for mounting leeway of  $\pm 5^\circ$ .
- Models provided for mounting to horizontal PCBs, vertical PCBs, or with screws.



### Ordering Information

Appearance	Mounting type	Model
	Horizontal mount	D7A-1
	Vertical mount	D7A-2
	Screw mount	D7A-3-1

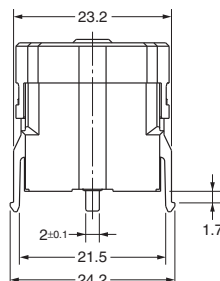
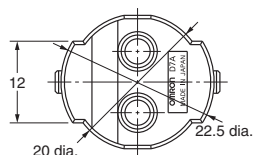
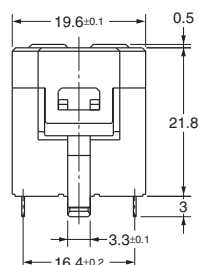
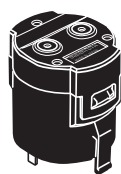
### Performance

Item		Model	D7A-1	D7A-2	D7A-3-1
		Type	Horizontal mount	Vertical mount	Screw mount
Operating characteristic	Acceleration range		90 to 170 gals*		
	Contact form		SPST-NO		
Output	Electrical ratings		5 $\mu$ A to 1mA at 3 VDC		
	Contact resistance		Initial value: 1 $\Omega$ max. (measured at terminals)		
Basic specifications	Electrical life expectancy		10,000 operations (at 10 to 20 operations/min with resistive load of 1 mA at 3 VDC)		
	Degree of protection		IP40 (switch section)		
	Operating temperature		-30 to 70°C (with no icing or condensation)		
	Storage temperature		-40 to 70°C (with no icing or condensation)		
	Operating humidity		25% to 85%		
	Dielectric strength		250 VAC, 50/60 Hz for 1 min		

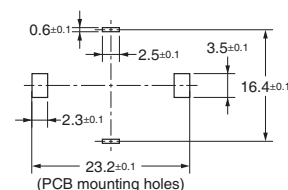
\* This is the average value of three measurements that were taken with the continuous horizontal vibration method with periods of 0.3 s, 0.5 s, and 0.7s.  
Note: Ask your OMRON representative for details.

## ■ Dimensions (Unit: mm)

### D7A-1

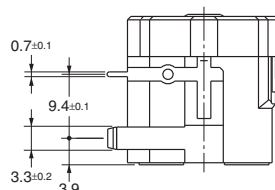
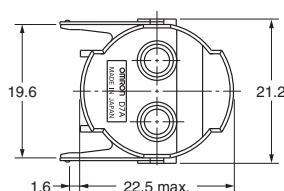
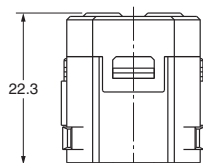
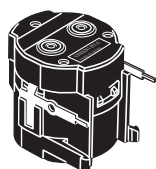


#### PCB Mounting Holes

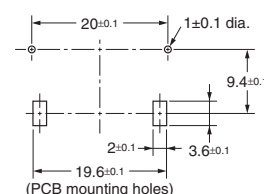


Note: Mount the Vibration Sensor to a PCB with a thickness of 1.6 mm and solder it.

### D7A-2

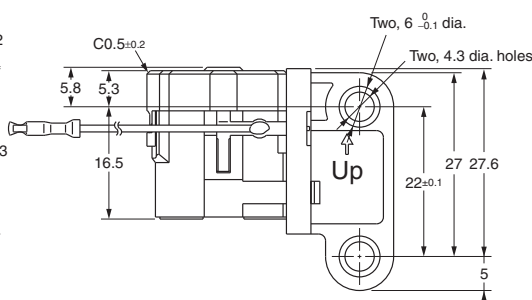
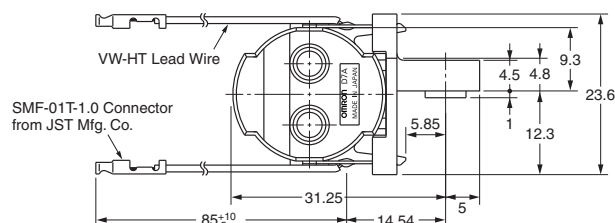
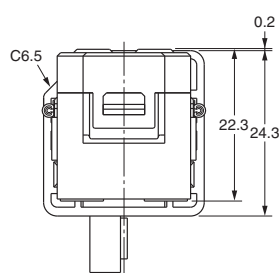
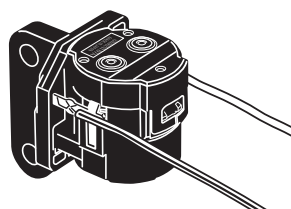


#### PCB Mounting Holes

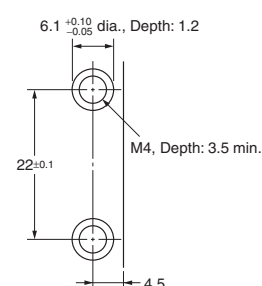


Note: Mount the Vibration Sensor to a PCB with a thickness of 1.6 mm and solder it.

### D7A-3-1



#### Mounting Hole Dimensions



Note: Mount the Vibration Sensor with M4 mounting screws or the equivalent and tighten the screws to a torque of 0.981 to 1.176N·m

## ■ Safety Precautions

- These Vibration Sensors are precision devices. Handle them with care. Never use a Vibration Sensor that has been dropped. Also, if a Vibration Sensor has been subjected to excessive shock, do not handle it as a normal Vibration Sensor and inspect it again or take other measures to confirm proper operation.

Please check each region's Terms & Conditions by region website.

## OMRON Corporation

Device & Module Solutions Company

### Regional Contact

**Americas**

<https://components.omron.com/us>

**Asia-Pacific**

<https://components.omron.com/ap>

**Korea**

<https://components.omron.com/kr>

**Europe**

<https://components.omron.com/eu>

**China**

<https://components.omron.com.cn>

**Japan**

<https://components.omron.com/jp>