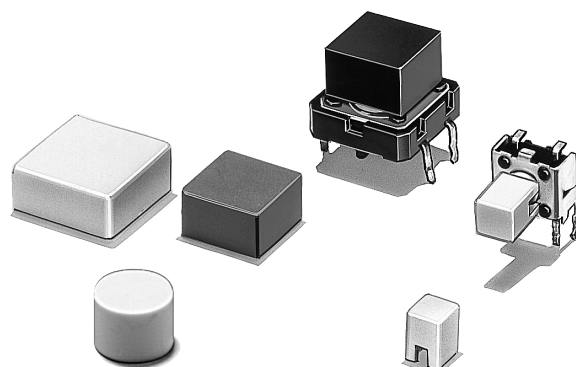


Key Top Designed Specially for Projected-plunger-type B3F, B3FS, and B3W Switches

- Available in a wide range of colors and sizes.



### ■ List of Models

For B3F, B3FS, and B3W Switches

Color	6 × 6 mm Switches B3F-1000, -1000-G, B3F-3000, -3000-G, -6000, B3W-1000, B3FS-1000			12 × 12 mm Switches B3F-4000, -5000, -5001, B3W-4000, B3FS-4000		
	4 × 4 mm Key Top	6 mm dia. Key Top	D-type Key Top	9 × 9 mm Key Top	12 × 12 mm Key Top	9.5-mm dia.
Ivory	B32-1000	B32-2000	B32-2100	B32-1200	B32-1300	B32-1600
Black	B32-1010	B32-2010	B32-2110	B32-1210	B32-1310	B32-1610
Orange	B32-1020	---	---	B32-1220	B32-1320	B32-1620
Yellow	B32-1030	---	---	B32-1230	B32-1330	B32-1630
Blue	B32-1040	---	---	B32-1240	B32-1340	---
Green	B32-1050	---	---	B32-1250	B32-1350	---
White	B32-1060	---	---	B32-1260	B32-1360	---
Red	B32-1080	---	---	B32-1280	B32-1380	---

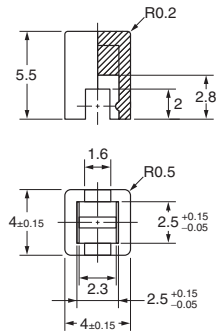
Note: Bulk Packed, 1000 pcs per bag. Order in multiple of the package quantity.

### ■ Characteristics

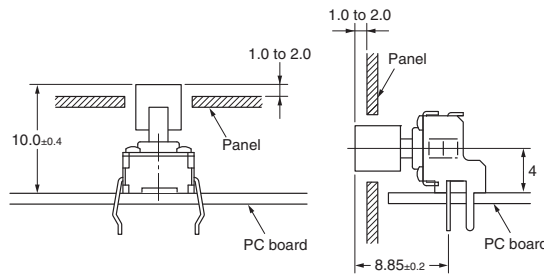
Ambient operating temperature	-25°C to +70°C at 60%RH max. (with no icing or condensation)
Ambient operating humidity	35% to 85% (at 5 to 35°C)

■ Dimensions (Unit: mm)

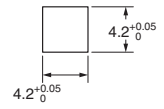
B32-10□0



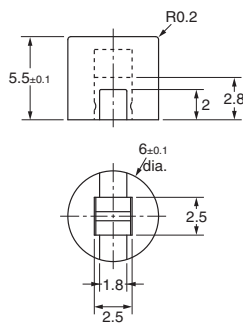
Reference Dimensions



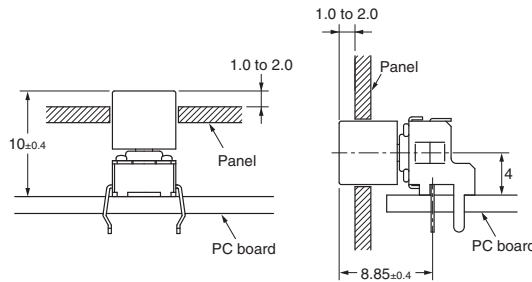
Panel Cutout



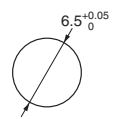
B32-2000  
B32-2010



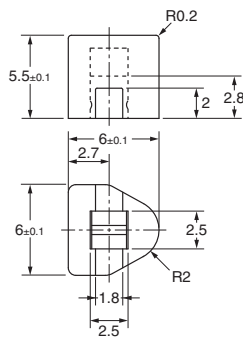
Reference Dimensions



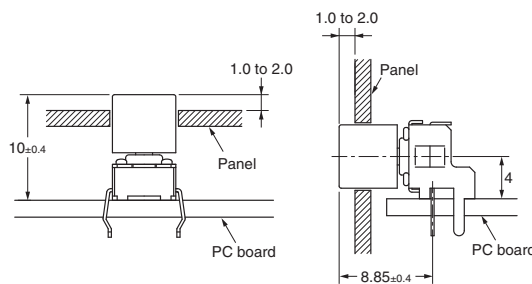
Panel Cutout



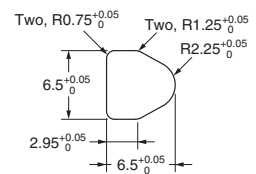
B32-2100  
B32-2110



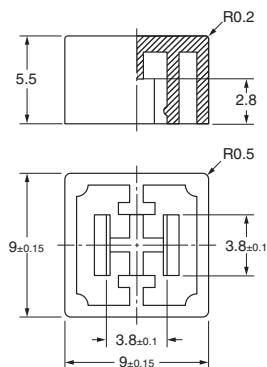
Reference Dimensions



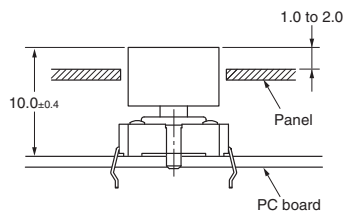
Panel Cutout



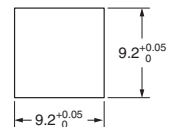
B32-12□0



Reference Dimensions

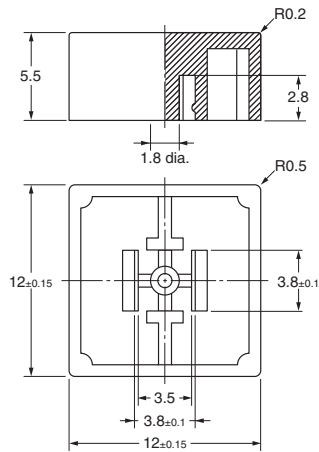
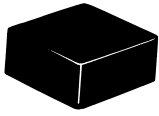


Panel Cutout

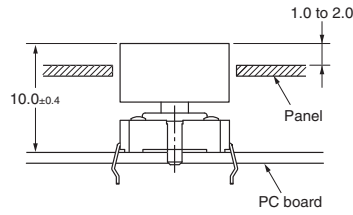


**Note:** Unless otherwise specified, a tolerance of  $\pm 0.4$  mm applies to all dimensions.

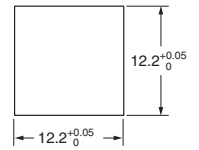
**B32-13□0**



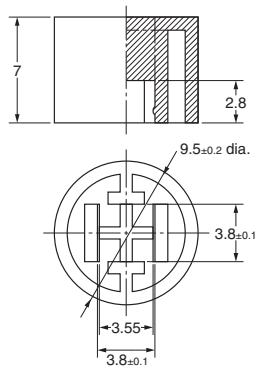
**Reference Dimensions**



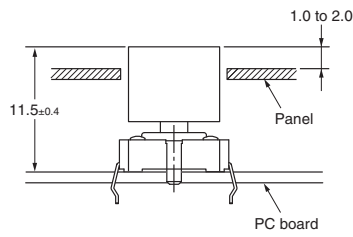
**Panel Cutout**



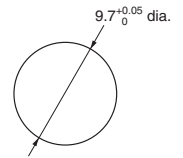
**B32-16□0**



**Reference Dimensions**



**Panel Cutout**



**Note:** Unless otherwise specified, a tolerance of  $\pm 0.4$  mm applies to all dimensions.

**■ Precautions**

Mount the Key Top on to the Switch after soldering, otherwise the Key Top may be deformed by the soldering heat.

Please check each region's Terms & Conditions by region website.

**OMRON Corporation**  
Device & Module Solutions Company

**Regional Contact**

**Americas**  
<https://components.omron.com/us>  
**Asia-Pacific**  
<https://components.omron.com/ap>  
**Korea**  
<https://components.omron.com/kr>

**Europe**  
<https://components.omron.com/eu>  
**China**  
<https://components.omron.com.cn>  
**Japan**  
<https://components.omron.com/jp>

© OMRON Corporation 2007-2022 All Rights Reserved.  
In the interest of product improvement, specifications are subject to change without notice.

**Cat. No. A077-E1-08**  
1122 (0207)