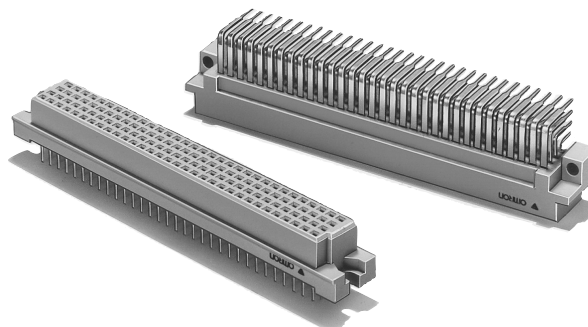


Multi-contact (4-row, 128-contact) Connectors Expanding the DIN Concept

- Fully preserve the characteristics of normal DIN connectors while increasing the number of contacts available.
- Right-angle plug terminals of the standard DIN type and those vertically mounted on PCBs are available.
- Twin-contact sockets are used for high reliability and low insertion force.



■ Ratings and Characteristics

Rated current	2 A
Rated voltage	300 VAC
Contact resistance	30 mΩ max. (at 20 mV, 100 mA max.)
Insulation resistance	10 ⁶ MΩ min. (at 100 VDC)
Dielectric strength	1,000 VAC for 1 min (leakage current: 1 mA max.)
Total insertion force	0.59 N max. per contact
Removal force	0.15 N min. (with test gauge, t = 0.56 mm)
Insertion durability	200 times
Ambient operating temperature	–55 to 125°C (with no icing at low temperature)

■ Materials and Finish

Type		Plugs	Sockets
Housings		Fiber-glass reinforced PBT resin (UL94 V-0)/gray	
Contacts	Mating end	Brass/nickel base, 0.4-μm gold plating (See note.)	Phosphor bronze/nickel base, 0.4-μm gold plating (See note.)
	Terminal	Brass/nickel base, 2.0-μm tin plating	Phosphor bronze/nickel base, 2.0-μm tin plating

Note: For non-standard plating, contact your OMRON representative.

XC5M Four-row Plugs

■ Dimensions

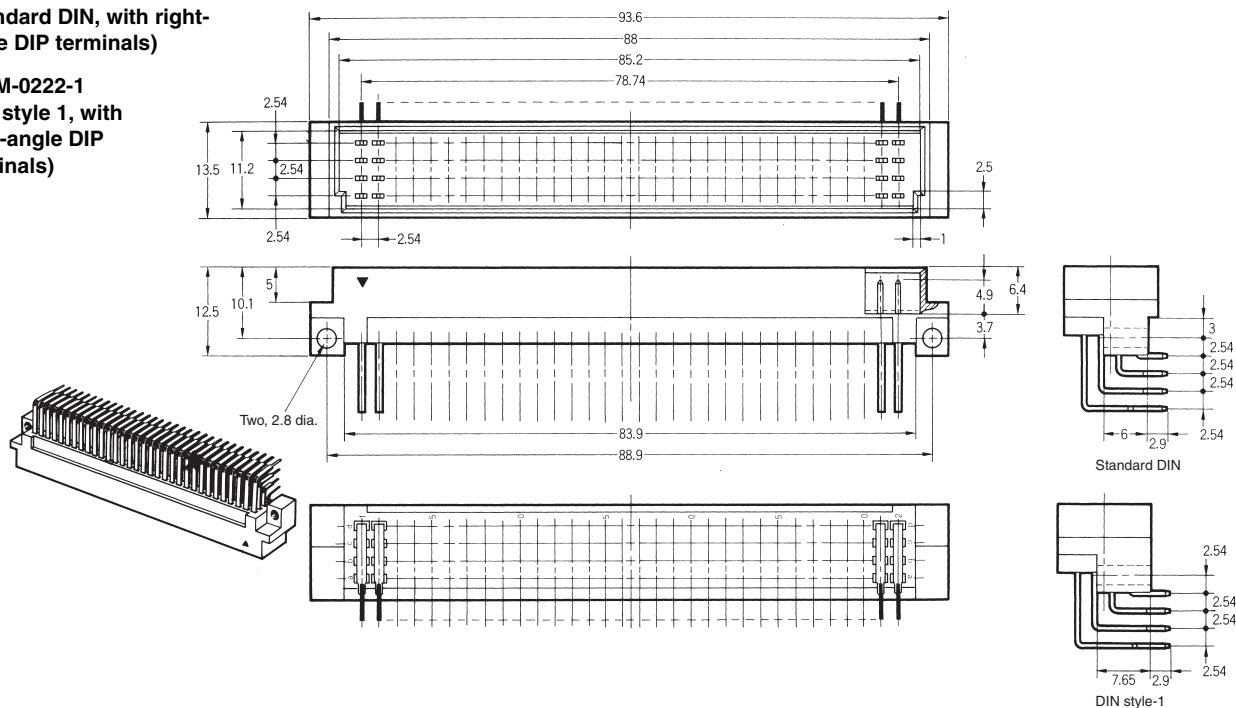
(unit: mm)

XC5M-0222

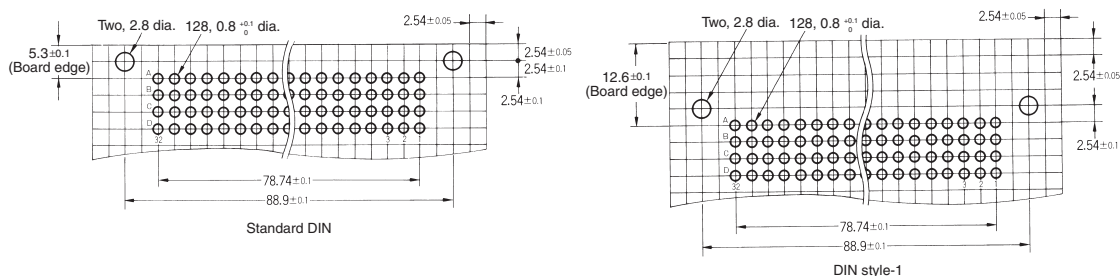
(Standard DIN, with right-angle DIP terminals)

XC5M-0222-1

(DIN style 1, with right-angle DIP terminals)



Mounting holes (bottom view)



■ Ordering Information

No. of contacts	Housing	Model
128	Standard DIN	XC5M-0222
	DIN style 1	XC5M-0222-1

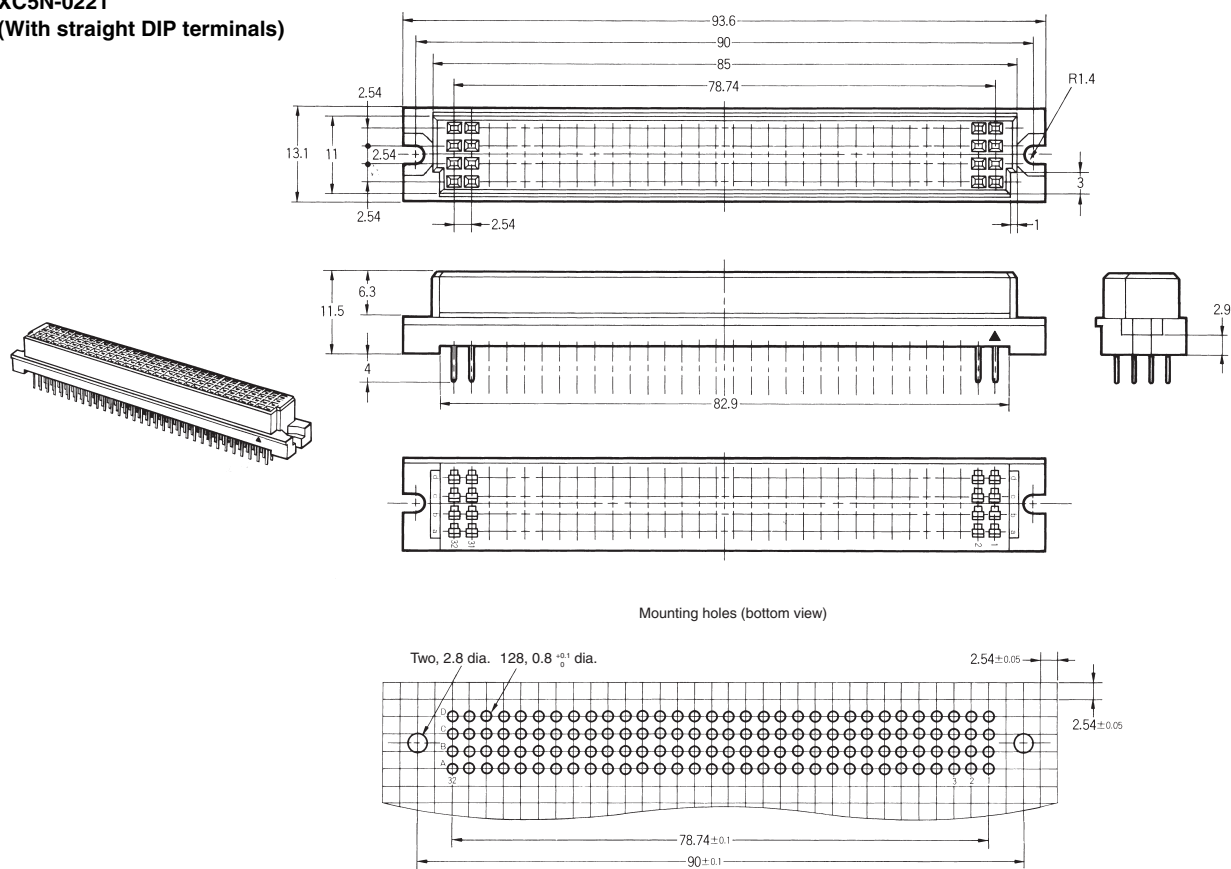
XC5N Four-row Sockets

■ Dimensions

(unit: mm)

XC5N-0221

(With straight DIP terminals)

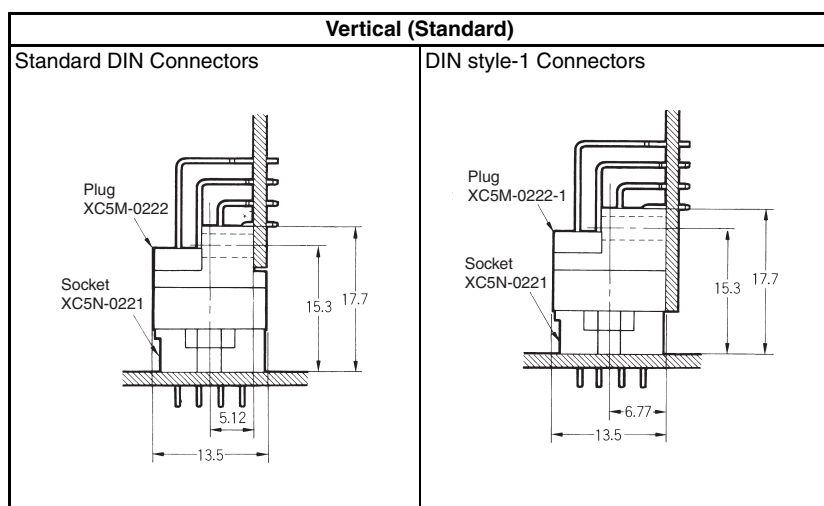


■ Ordering Information

No. of contacts	Terminal type	Model
128	Straight DIP terminals	XC5N-0221

■ Mating Diagrams

(unit: mm)



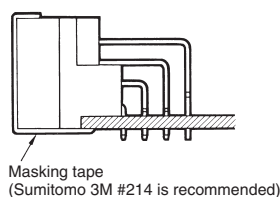
■ Precautions

Correct Use

Soldering

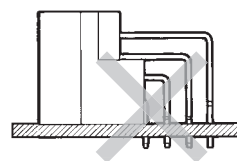
Automated Soldering

Before using automated soldering on a Connector that has right-angle terminals, mask the Connector (refer to the diagram).



Mounting Position on PCB

When mounting right-angle terminals (DIN Style-1 Connectors) on a PCB, select a position where the PCB is not under the body of the Connector.



Automated Soldering Conditions (Jet Flow)

1. Soldering temperature: $250 \pm 5^{\circ}\text{C}$
2. Continuous soldering time: Within 5 ± 1 s

■ Approval Standard

The approval rating values for overseas standards are different from the performance values determined individually. Confirm the values before use.

Model	Standard	File No.	Rating
XC5M-0222	Non Approved Models	---	---
XC5M-0222-1	Non Approved Models	---	---
XC5N-0221	Non Approved Models	---	---

Please check each region's Terms & Conditions by region website.

OMRON Corporation

Device & Module Solutions Company

Regional Contact

Americas

<https://components.omron.com/us>

Asia-Pacific

<https://components.omron.com/ap>

Korea

<https://components.omron.com/kr>

Europe

<https://components.omron.com/eu>

China

<https://components.omron.com.cn>

Japan

<https://components.omron.com/jp>

© OMRON Corporation 2012-2022 All Rights Reserved.
In the interest of product improvement, specifications are subject to change without notice.

Cat. No. G052-E1-04
0922 (0412)