

## Tactile Switch with protective cover

## B3F-8

### Through-hole Mounting: the Ideal Tactile Switches to Prevent Malfunctions

- Covers prevent the Switches from being unintentionally pressed.
- Return springs ensure that the covers are closed.



### ■ List of Model

Type	Model
Tactile Switch with protective cover	B3F-8000 (N)

**Note:** The Switches are packed in boxes. The minimum order unit is 200 Switches per box. Order in multiples of the packing quantity.

### ■ Operating Characteristics

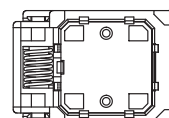
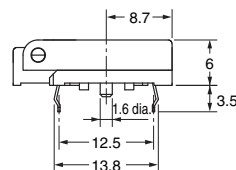
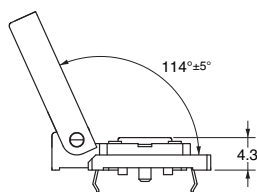
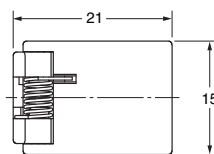
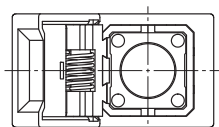
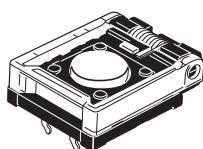
Item	B3F-8000 (N)
Operating force (OF)	1.27±0.49 N {130±50 gf}
Releasing force (RF)	0.29 N {30 gf} min.
Pretravel (PT)	0.3 <sup>+0.2</sup> <sub>-0.1</sub> mm

### ■ Ratings/Characteristics

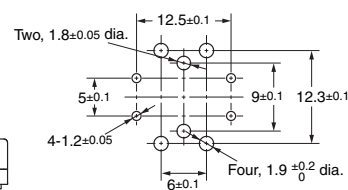
Rating (resistive load)	1 to 50 mA, 3 to 24 VDC
Minimum applicable load (reference value)	10 µA at 1 VDC (resistive load)
Ambient operating temperature	-25°C to +70°C at 60%RH max. (with no icing or condensation)
Ambient operating humidity	35% to 85% RH (at +5 to +35 °C )
Contact form	SPST-NO
Contact resistance (initial value)	100 mΩ max.
Insulation resistance	100 MΩ max. (at 250 VDC with insulation tester)
Dielectric strength	500 VAC, 50/60Hz for 1 min
Bounce time	5 ms max.
Vibration resistance	10 to 55 Hz, 1.5 mm double amplitude
Shock resistance	Destruction: 1,000 m/s <sup>2</sup> max. Malfunction: 100 m/s <sup>2</sup> max.
Durability	Switch; 3,000,000 operations Min., Cover; 5,000 operations Min.
Degree of protection	IEC IP00
Washing	Not possible

### ■ Dimensions

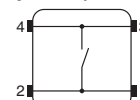
#### B3F-8



#### PCB Processing Dimensions (Reference Only) (Top View) (PCB thickness t=1.6)



#### Terminal Arrangement/ Internal Connections (Top View)



**Note:** Unless otherwise specified, a tolerance of ± 0.5 mm applies to all dimensions.

## ■ Precautions

Be sure to read the safety precautions common to all Tactile Switches for correct use.

Please check each region's Terms & Conditions by region website.

## OMRON Corporation

Device & Module Solutions Company

### Regional Contact

**Americas**

<https://components.omron.com/us>

**Asia-Pacific**

<https://components.omron.com/ap>

**Korea**

<https://components.omron.com/kr>

**Europe**

<https://components.omron.com/eu>

**China**

<https://components.omron.com.cn>

**Japan**

<https://components.omron.com/jp>