

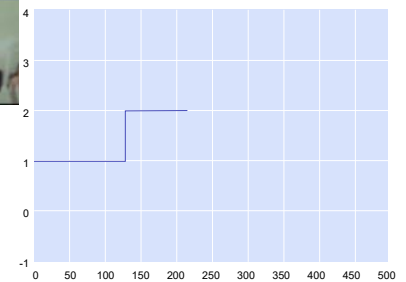
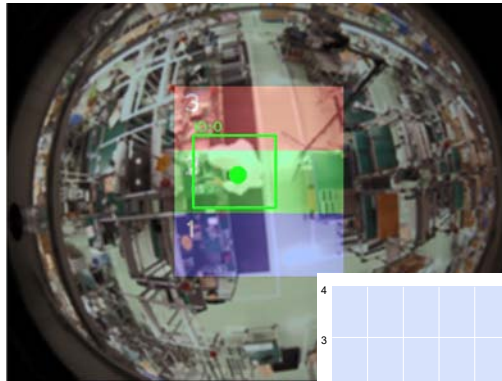
AM1

Top-Down View Human Body Detection Software

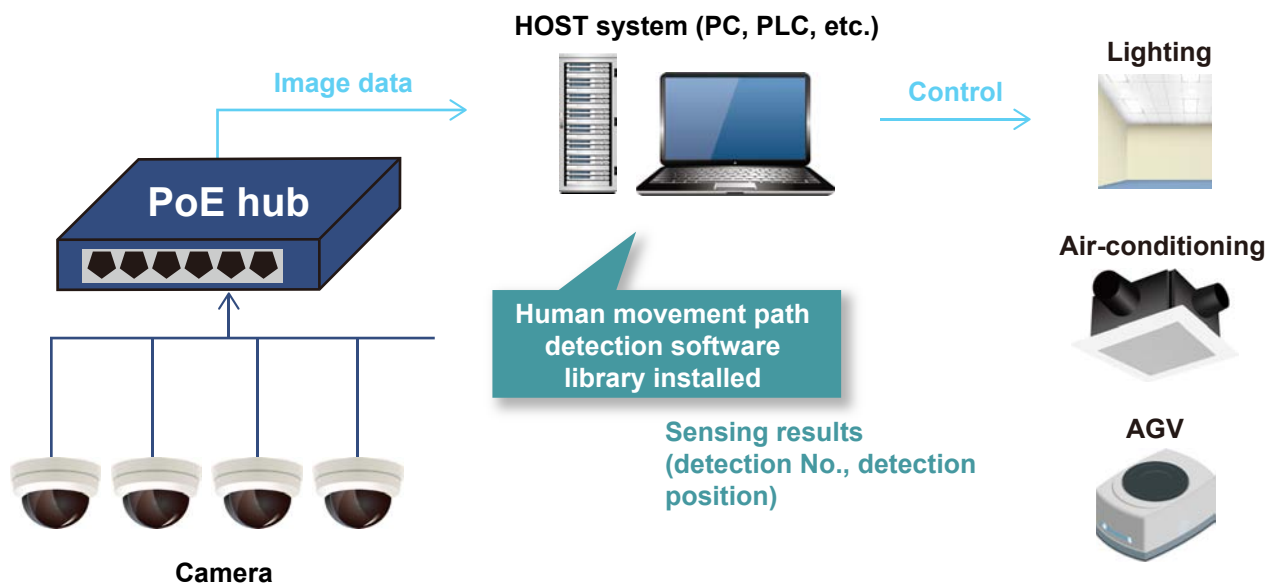
Outputs Location Information of the Operator and Contributes to Improved Productivity

- Can detect* with a single camera having a fish-eye lens.
- Can reduce overlapping with equipment and blind spots.
- Since sensing is performed with visible images, the points of concern can be checked on the images.
- The same detection performance as the angle of view of a surveillance camera can be ensured even in the case of a top-down view.

* Can also be operated using a commercially available webcam and a PC. Contact OMRON for more details.



System Example



AM1

System Conditions

Input image conditions

Image size	<Supported range> Image width : 1,624 pixels Image height : 1,240 pixels	
Format	The image input as the human body detection target in the main library is a RAW format image with the upper left of the image as the origin.	
	Image format	Image order
	BGR image	BGR: B0G0R0B1G1R1...

Input human body conditions

Detection size	<Supported range> Body height: 150 cm to 190 cm
Human body position	<Supported range> Distance directly below camera: 0 to 3.5 m
Number of human bodies detected	<Supported range> 0 to 10 people
Camera installation height	<Supported range> 2.5 to 5.0 m

Note: If the above range is exceeded, the detection performance declines. Also, it may not be possible to perform detection even within the above range.

Detection Specifications

Item	Range
Color of clothes	A color difference of 20 or above between the color of clothes of the entire body or the lower half body and the background color
Orientation of the person	No restrictions
Posture	Standing posture
Body height	150 cm to 190 cm
Body frame	No restrictions
Range of the person hidden by an object	Direction of head : 15% or less Direction of feet : 35% or less Entire body : 15% or less
Range of the person hidden by another person (overlapping)	Hidden range: 25% or less
Processing speed	90 ms Note 1. Measurement environment CPU: Intel® Core™ i7-9700 CPU @ 3.00 GHz Quad-core processor Memory: 8 GB Note 2. The processing time increases or decreases depending on the number of people detected Note 3. Value for maximum number of people (10)

Note: Intel, Celeron, and Intel Core are trademarks of Intel Corporation in the United States and other countries.

Precautions

Warning

For correct usage

Do not use this product for the safety and security of life.

This could result in an accident.

Do not use this product in vehicles (including two-wheelers).



Please check each region's Terms & Conditions by region website.

OMRON Corporation

Device & Module Solutions Company

Regional Contact

Americas

<https://components.omron.com/us>

Asia-Pacific

<https://components.omron.com/ap>

Korea

<https://components.omron.com/kr>

Europe

<https://components.omron.com/eu>

China

<https://components.omron.com.cn>

Japan

<https://components.omron.com/jp>