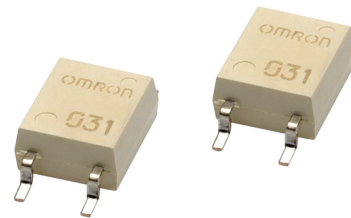


G3VM-601G

MOS FET Relays SOP 4-pin, High-load-voltage Type

MOS FET Relays in SOP 4-pin packages for high load voltages

- Load voltage: 600 V



Note: The actual product is marked differently from the image shown here.

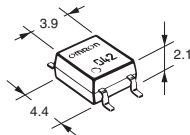
Application Examples

- Semiconductor test equipment
- Test & Measurement equipment
- Communication equipment
- Various battery-driven devices
- Security equipment
- Industrial equipment
- Power circuit
- Amusement equipment

Package

(Unit : mm, Average)

SOP 4-pin



Note: The actual product is marked differently from the image shown here.

Model Number Legend

G3VM-□□□□
1 2 3 4

- 1. Load Voltage**
60 : 600 V
- 2. Contact form**
1 : 1a (SPST-NO)
- 3. Package**
G : SOP 4-pin
- 4. Other informations**

When specifications overlap, serial code is added in the recorded order.

Ordering Information

Package	Contact form	Terminals	Load voltage (peak value) *	Continuous load current (peak value) *	Stick packaging		Tape packaging	
					Model	Minimum package quantity	Model	Minimum package quantity
SOP4	1a (SPST-NO)	Surface-mounting Terminals	600 V	70 mA	G3VM-601G1	100 pcs.	G3VM-601G1(TR)	2,500 pcs.
				90 mA	G3VM-601G		G3VM-601G(TR)	

* The AC peak and DC value are given for the load voltage and continuous load current.

Note: To order tape packaging for Relays with surface-mounting terminals, add "(TR)" to the end of the model number.

Absolute Maximum Ratings (Ta = 25°C)

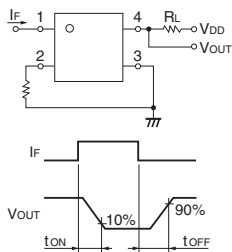
Item		Symbol	G3VM-601G1	G3VM-601G	Unit	Measurement conditions	
Input	LED forward current	IF	30	50	mA		
	Repetitive peak LED forward current	IFP	1		A	100 μs pulses, 100 pps	
	LED forward current reduction rate	ΔIF/°C	-0.3	-0.5	mA/°C	Ta ≥ 25°C	
	LED reverse voltage	VR	5		V		
Connection temperature		TJ	125		°C		
Output	Load voltage (AC peak/DC)	V _{OFF}	600		V		
	Continuous load current (AC peak/DC)	I _o	70	90	mA		
	ON current reduction rate	ΔI _o /°C	-0.7	-0.9	mA/°C	Ta ≥ 25°C	
	Pulse ON current	I _{op}	210	270	mA	t=100 ms, Duty=1/10	
	Connection temperature		TJ	125		°C	
	Dielectric strength between I/O *		V _{I-O}	1500		V _{rms}	AC for 1 min
Ambient operating temperature		Ta	-40 to +85		°C	With no icing or condensation	
Ambient storage temperature		T _{stg}	-55 to +125		°C		
Soldering temperature		-	260		°C	10 s	

* The dielectric strength between the input and output was checked by applying voltage between all pins as a group on the LED side and all pins as a group on the light-receiving side.

Electrical Characteristics (Ta = 25°C)

Item	Symbol		G3VM-601G1	G3VM-601G	Unit	Measurement conditions
LED forward voltage	V _F	Minimum	1.1	1.0	V	I _F =10 mA
		Typical	1.27	1.15		
		Maximum	1.4	1.3		
Reverse current	I _R	Maximum	10		μA	V _R =5 V
Capacitance between terminals	C _T	Typical	30		pF	V=0, f=1 MHz
Trigger LED forward current	I _{FT}	Typical	–	0.4	mA	G3VM-601G1 : I _o =70 mA G3VM-601G : I _o =90 mA
		Maximum	0.2	1		
Release LED forward current	I _{FC}	Minimum	–	0.1	mA	I _{oFF} =100 μA
		Typical	0.001	–		
Maximum resistance with output ON	R _{ON}	Typical	35	45	Ω	G3VM-601G1 : I _F =0.5 mA, I _o =70 mA, t < 1 s G3VM-601G : I _F =2 mA, I _o =90 mA
		Maximum	60			
Current leakage when the relay is open	I _{LEAK}	Typical	1	–	nA	V _{oFF} =600 V
		Maximum	1,000			
Capacitance between terminals	C _{OFF}	Typical	75		pF	V=0, f=1 MHz
Capacitance between I/O terminals	C _{I-O}	Typical	0.8		pF	f=1 MHz, V _S =0 V
Insulation resistance between I/O terminals	R _{I-O}	Minimum	1000		MΩ	V _{I-O} =500 VDC, R _{oH} ≤60%
		Typical	10 ⁸			
Turn-ON time	t _{ON}	Typical	2		ms	G3VM-601G1 : I _F =0.5 mA, R _L =200 Ω, V _{DD} =10 V * G3VM-601G : I _F =2 mA, R _L =200 Ω, V _{DD} =10 V *
		Maximum	10	8		
Turn-OFF time	t _{OFF}	Typical	1	0.5	ms	G3VM-601G1 : I _F =0.5 mA, R _L =200 Ω, V _{DD} =10 V * G3VM-601G : I _F =2 mA, R _L =200 Ω, V _{DD} =10 V *
		Maximum	5	3		

* Turn-ON and Turn-OFF Times



Recommended Operating Conditions

For usage with high reliability, Recommended Operation Conditions is a measure that takes into account the derating of Absolute Maximum Ratings and Electrical Characteristics.

Each item on this list is an independent condition, so it is not simultaneously satisfy several conditions.

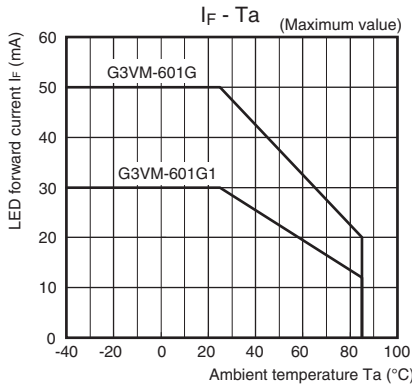
Item	Symbol		G3VM-601G1	G3VM-601G	Unit
Load voltage (AC peak/DC)	V _{DD}	Maximum	480		V
Operating LED forward current	I _F	Typical	0.5	2	mA
		Maximum	25		
Continuous load current (AC peak/DC)	I _o	Maximum	60	70	
Ambient operating temperature	T _a	Minimum	-20		°C
		Maximum	65		

Spacing and Insulation

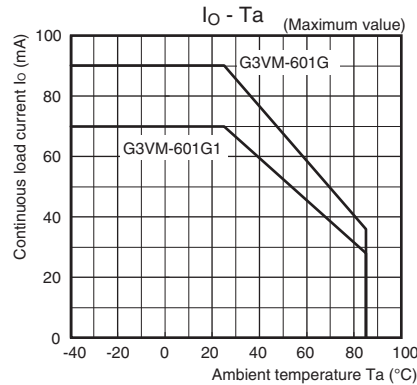
Item	Minimum	Unit
Creepage distances	4.0	mm
Clearance distances	4.0	
Internal isolation thickness	0.1	

Engineering Data

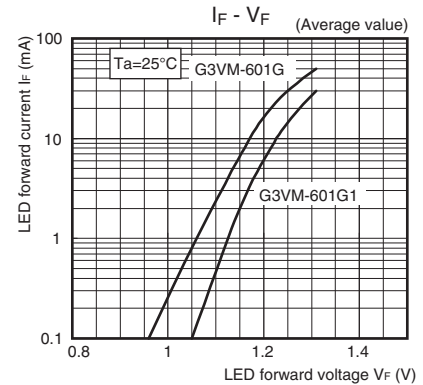
LED forward current vs. Ambient temperature



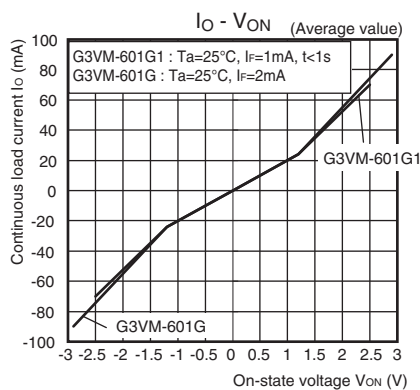
Continuous load current vs. Ambient temperature



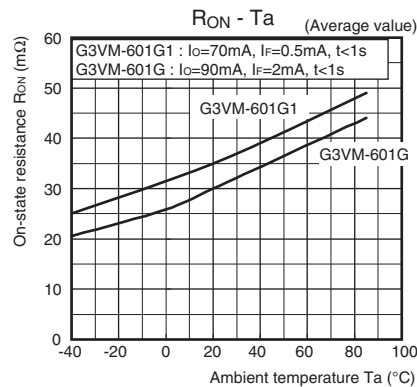
LED forward current vs. LED forward voltage



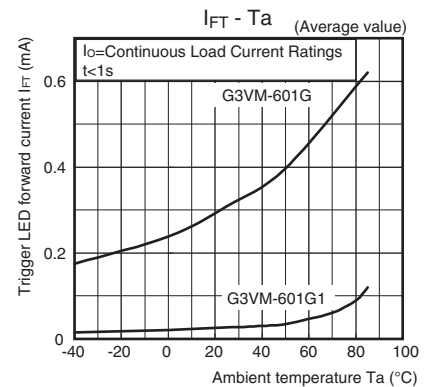
Continuous load current vs. On-state voltage



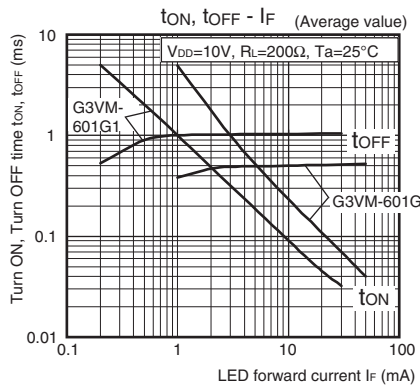
On-state resistance vs. Ambient temperature



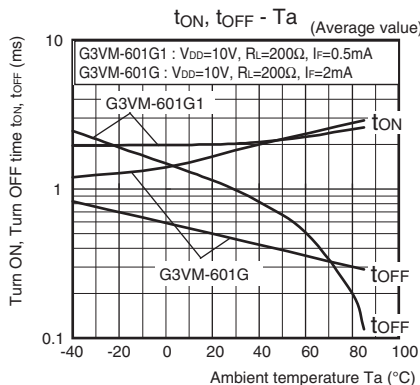
Trigger LED forward current vs. Ambient temperature



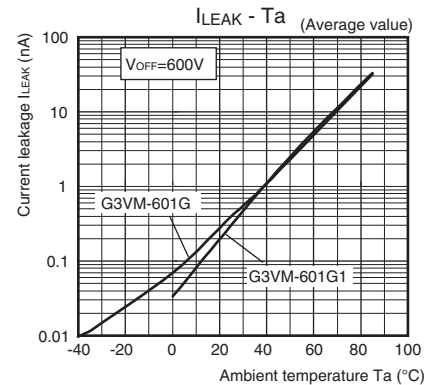
Turn ON, Turn OFF time vs. LED forward current



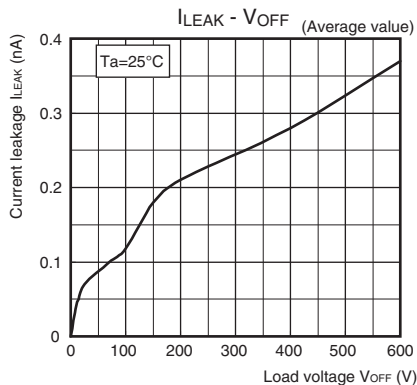
Turn ON, Turn OFF time vs. Ambient temperature



Current leakage vs. Ambient temperature



Current leakage vs. Load voltage G3VM-601G1



SOP

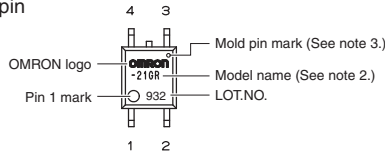
G3VM-601G□

■Appearance / Terminal Arrangement / Internal Connections

●Appearance

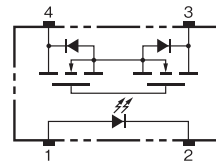
SOP (Small Outline Package)

SOP 4-pin



- Note: 1.** The actual product is marked differently from the image shown here.
- Note: 2.** "G3VM" does not appear in the model number on the Relay.
- Note: 3.** The indentation in the corner diagonally opposite from the pin 1 mark is from a pin on the mold.

●Terminal Arrangement/Internal Connections (Top View)

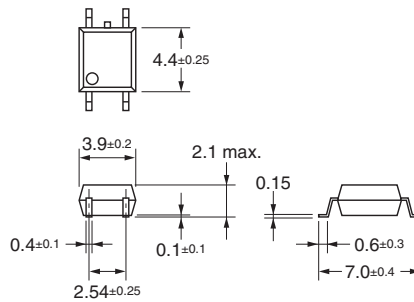


■Dimensions (Unit: mm)



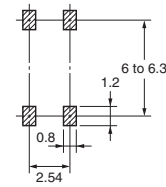
Surface-mounting Terminals

Weight: 0.1 g



Actual Mounting Pad Dimensions

(Recommended Value, Top View)



Note: The actual product is marked differently from the image shown here.

■Approved Standards

UL recognized

Approved Standards	Contact form	File No.
UL (recognized)	1a (SPST-NO)	E80555

■Safety Precautions

- Refer to the *Common Precautions for All MOS FET Relays* for precautions that apply to all MOS FET Relays.

Please check each region's Terms & Conditions by region website.

OMRON Corporation

Device & Module Solutions Company

Regional Contact

Americas

<https://components.omron.com/us>

Asia-Pacific

<https://components.omron.com/ap>

Korea

<https://components.omron.com/kr>

Europe

<https://components.omron.com/eu>

China

<https://components.omron.com.cn>

Japan

<https://components.omron.com/jp>