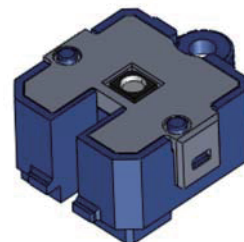


■ Features

Transmissive photomicrosensor with built-in LED with 3.3 mm groove width

- Two-color indicator LEDs are built into the sensor.
- Light-ON/Open collector output type.
- Connector connection type (compatible with ZE series manufactured by Nippon Crimp Terminal Mfg.)
- Screw-mount type.



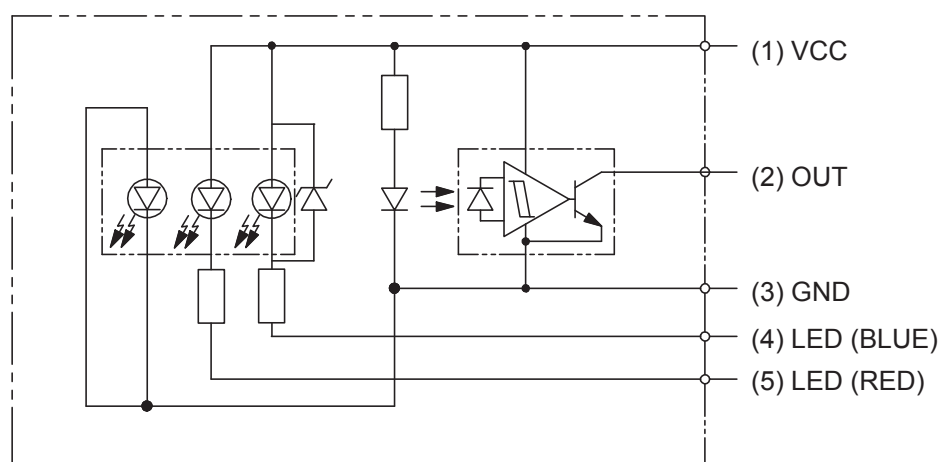
■ Absolute Max. Ratings (Ta = 25°C)

Item	Ratings / Performance	Note
Power supply voltage (V _{CC})	7 VDC	
Output voltage (V _{OUT})	16 VDC	Absolute maximum ratings
Output power dissipation (P _{OUT})	250 mW	Absolute maximum ratings
Output current (I _{OUT})	16 mA	Absolute maximum ratings
Ambient temperature	Operation: -10 to 70°C Storage: -20 to 80°C	(with no icing or condensation)
Ambient humidity	25 to 85 %RH	

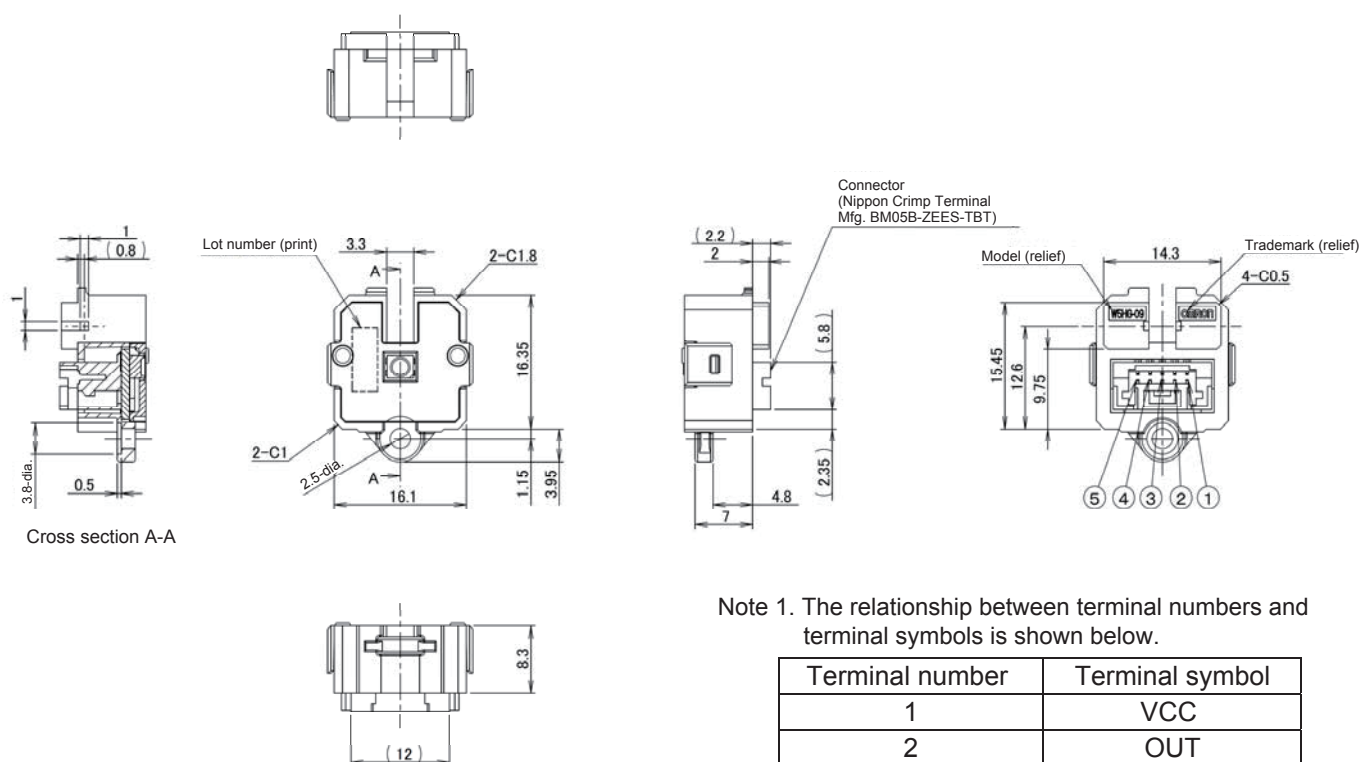
■ Electrical Characteristics (Ta = 25°C, V_{CC} = 5 V±10%)

Item	Ratings / Performance	Note
Power supply voltage (V _{CC})	5 VDC±10%	
Current consumption (I _{CC})	Maximum 80 mA	When the LED is ON Current for LED BLUE: Maximum 20 mA RED: Maximum 20 mA
Low level output voltage (V _{OL})	Maximum 0.4 V	I _{OUT} =16 mA, light incidence
High level output current (I _{OH})	Maximum 40 µA	V _{OUT} = 5 V, when blocked

■ Internal Circuit



External Dimensions



Note 1. The relationship between terminal numbers and terminal symbols is shown below.

Terminal number	Terminal symbol
1	VCC
2	OUT
3	GND
4	LED (BLUE)
5	LED (RED)

Note 2. The housing that fits the connector section must be the ZER-05 manufactured by J.S.T. Mfg. Co., Ltd.

* Unless otherwise specified, dimensional tolerances are IT16.
[Unit: mm]

Please check each region's Terms & Conditions by region website.

OMRON AMUSEMENT Co., Ltd

Regional Contact

Americas

<https://components.omron.com/us-en/>

Asia-Pacific

<https://components.omron.com/sg-en/>

Korea

<https://components.omron.com/kr-en/>

Europe

<https://components.omron.com/eu-en/>

China

<https://components.omron.com/cn/>

Japan

<https://components.omron.com/jp-ja/>